

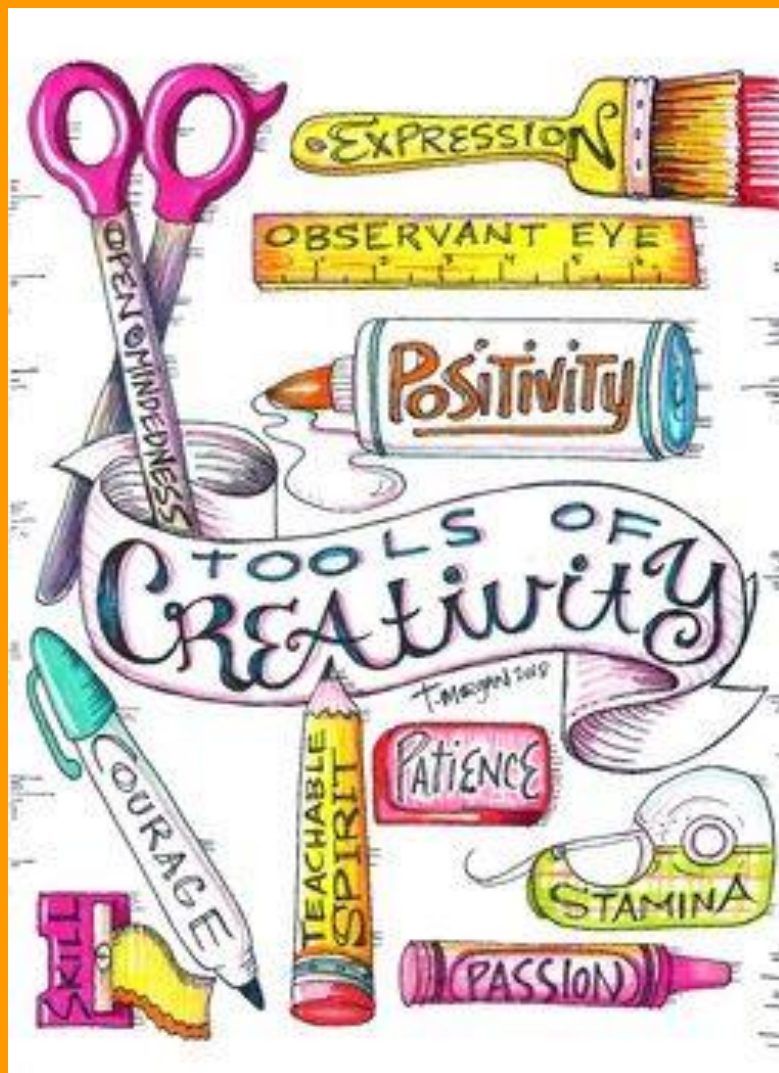
CEDARBANK SCHOOL

S2



Home Learning / Homework Book BGE

ART+
DESIGN
DESIGN



TASKS

- tonal drawing of knotted fabric
- observation drawing of shoes
- understanding ellipses and 3d form of cylinders (using tone)
- 3D Form - Sphere, Cone, Cylinder
- observational drawing of a cup or mug
- tonal study of a cup of tea or coffee and a biscuit
- pen and ink tonal practice sheet
- coloured pencil study of an onion
- coloured pencil study of a flower of your choice
- colour studies of fruit / vegetables
- coloured study of an eye
- design – typography
- observational drawing - stylising and simplifying for design development
- Artist analysis questions

STUDY

- Artist analysis template page – analysing 2 Artist Self-Portraits
- Recommended websites. Work created by artists and designers.
- BGE visual elements word bank and sentence starters
- Recommended videos for techniques
- Recommended history of drawing videos
- Best free recommended alternatives to Photoshop
- Looking inside an art gallery. Video links.

S2/ S3 Pupil Voice

Learn how to draw Anime

World of work - Art and Design related careers

Parent / Carer Information

Within this home learning booklet you will find many examples of drawings created by learners. Beside many of these drawing you may notice that **a level number** has been included, along with

- **developing** e.g *level 3, developing*
- **effective** e.g *level 2, effective*
- **highly effective** e.g *level 2, highly effective*



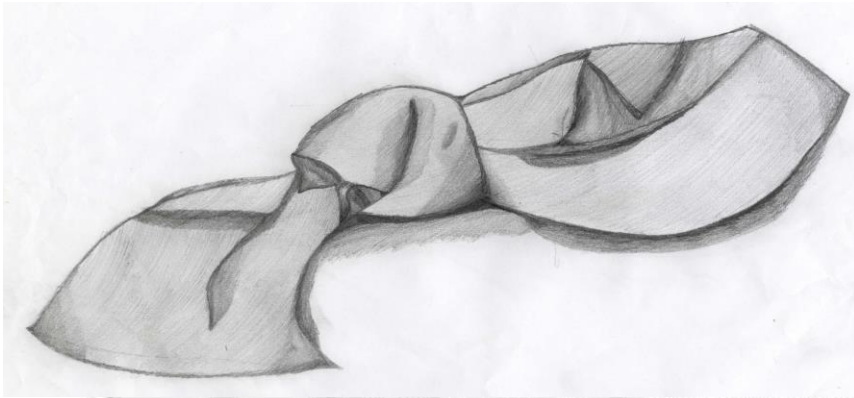
We have included these **assessment codes** to aid understanding of what a level looks like in Art and Design for both learners, and Parents / Carers. **Developing, effective and highly effective** denotes where the learner is within this level when assessed on an individual piece of work. If you wish to discuss levels further please speak to the Art and Design Teacher during parent contact opportunities such as Parent / Carers Evenings or writing in your child's contact book.

Tonal Drawing of Knotted Fabric

Tone is used to show the effect of light on surfaces or objects.

Contrasting tones create depth and 3D shape or form

Task: knot a pillow case or tea towel. Using **line** and **tone** draw knotted fabric.



level 2, effective



tonal gradient – highlight, light tone, mid tone, dark tone, dark



level 3, developing

level 4, developing



Observation Drawing of Shoes

Tone is used to show the effect of light on surfaces or objects.

- contrasting tones create depth and 3D shape or form
- focus - scale, shape, form (3D), perspective, tone, ellipses, pattern, texture

Task: set up a shoe or trainer. Using **line** and **tone** draw the shoe and cast shadow.



level 3, effective



level 2, highly effective

Watch:

Understanding how tone is used in Art and Design:

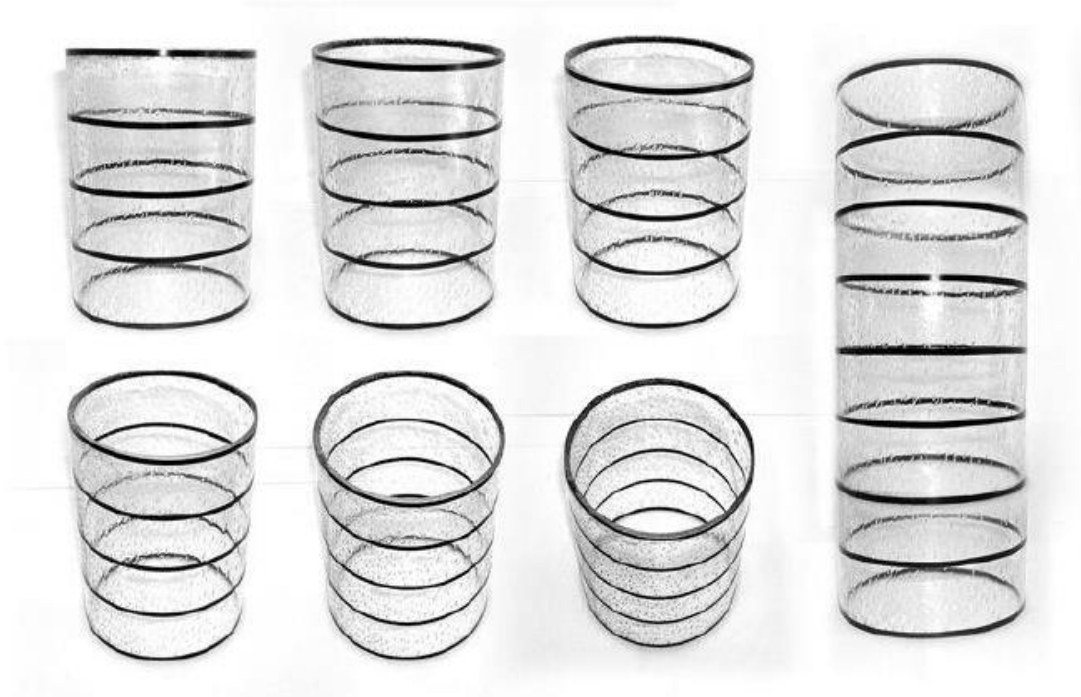
<https://www.bbc.co.uk/bitesize/guides/z8rh2nb/video>

Understanding ellipses and 3D form of cylinders (using tone)

viewpoint

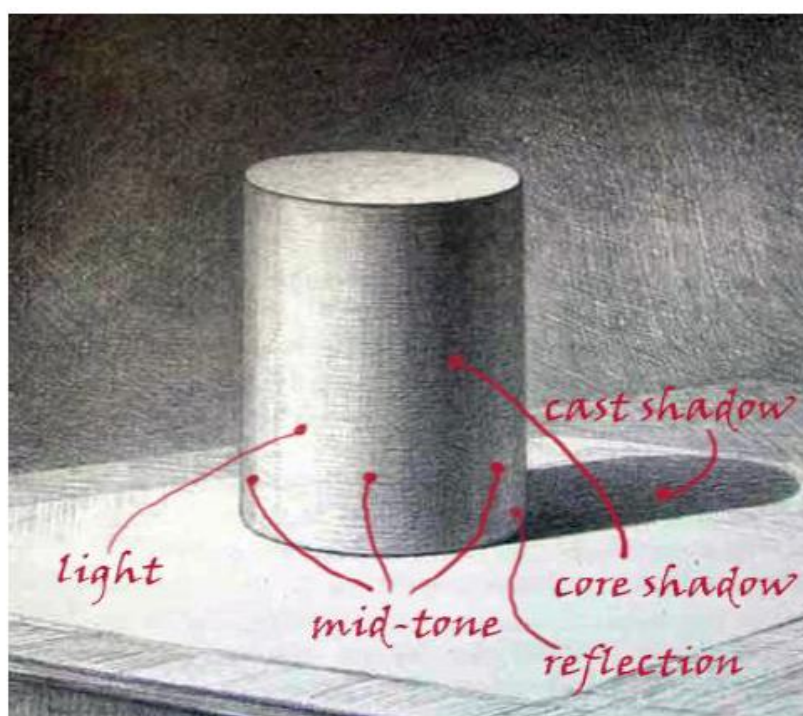
perspective

ellipses



Tone is used to show the effect of light on surfaces or objects.

Contrasting tones create depth and 3D shape or form



3D Form - Sphere, Cone, Cylinder

Task: draw a sphere, cone and cylinder using tone.

To create 3D forms you need to:

1. Do a line drawing first using proportions, measuring, ellipses, perspective and lines of symmetry.
2. Apply a range of contrasting tone to create form and depth by showing light, medium and dark tones for shadows and highlights.



This is a challenge!

Need help?

Watch:

<https://www.youtube.com/watch?v=rqAD5qG8n0I>

Observational Drawing of a Cup or Mug

Scale / proportions

- line of symmetry
- scale – life size
- measurements / proportions – height and width
- ellipses
- positive and negative space

Task: using the above focus points and **line, shape** and **tone** create a drawing of a mug or cup from your home.



Pupil examples – tonal study of a mug



level 4, highly effective

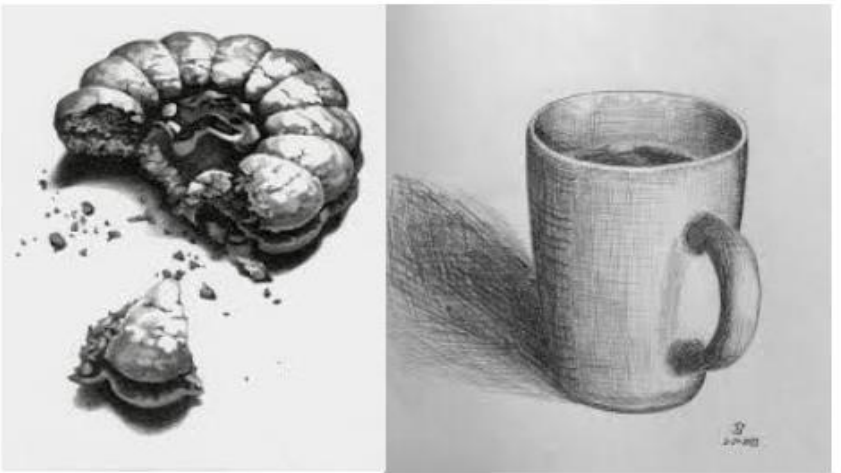


level 2, highly effective

Tonal study of a cup of tea or coffee and a biscuit in a small compositional arrangement

focus - scale, shape, form (3d), perspective, tone, ellipses, pattern, texture

Task: using the above focus point and **line**, **shape** and **tone** create a drawing of a small compositional arrangement of some biscuits and a cup from your home.



single studies drawings



This is a compositional arrangement.

Set up your own composition and begin drawing.

Pen and Ink Tonal Practice Sheet

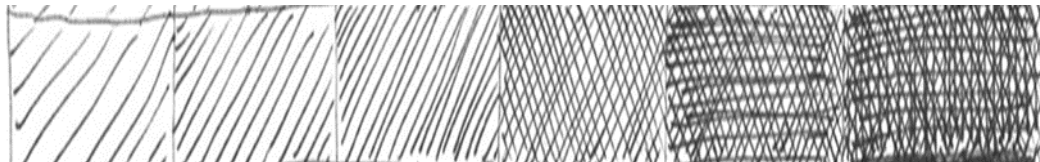
Use the different techniques; hatching, cross-hatching and stippling to create tone going from the lightest to the darkest using your **fine-liner pen**.

Hatching – draw strokes in the same direction.

Crosshatching draw strokes in 2 different directions.

Stippling – using dots of ink

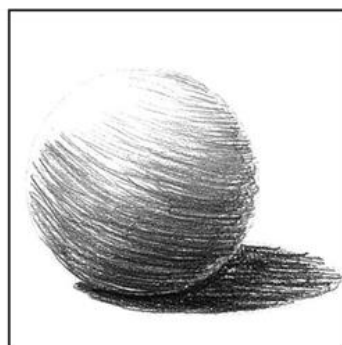
TIP: the closer you space your lines or dots, the darker the tone becomes.



	LIGHTEST				DARKEST
HATCHING					
CROSS-HATCHING					
STIPPLING					

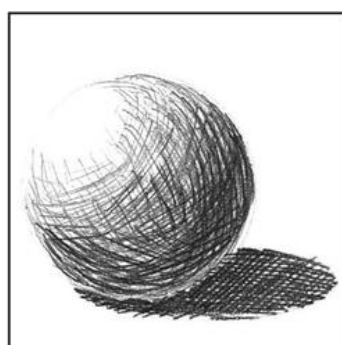
Hatching

Draw strokes in the same direction and layer them to produce darker shades.



Crosshatching

Similar to hatching, crosshatching uses layered strokes to build shades. Draw the strokes in two different directions to create this effect.



Stippling is made with dots. The closer the dots are together the darker the tone.

Coloured pencil study of an onion

focus - scale, form/ 3D shape, blended colour, tone, texture

Task: only draw from a real onion or a photographic image. You must not create a drawing of someone else's drawing. Blend coloured pencils to create **tone**, **form** and **texture** of an onion.



level 4, highly effective



level 4, developing

Coloured pencil study of a flower of your choice

focus - scale, form/ 3D shape, blended colour, tone, texture, perspective.

Task: draw from a real flower or a photographic image only. Use coloured pencils and the visual elements of **line, shape, tone, form, colour, texture, pattern.**



level 4, developing



level 3, effective



level 3, effective



level 4, highly effective



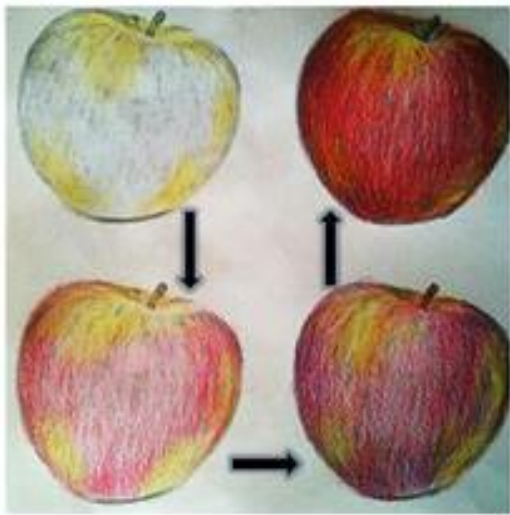
level 3, developing

Colour Studies of Fruit / Vegetables

focus - colour blending, tone, form and colour in the shadow underneath

Task instructions

- lightly draw out the shape from **a real piece of fruit / veg**
- build up the lightest colour and tone following the form with directional marks
- build and blend colour/ tone gradually use the diagram below as a guide
- the shadow underneath should be made up of blended colour rather than being black or grey



level 2, highly effective



level 3, developing



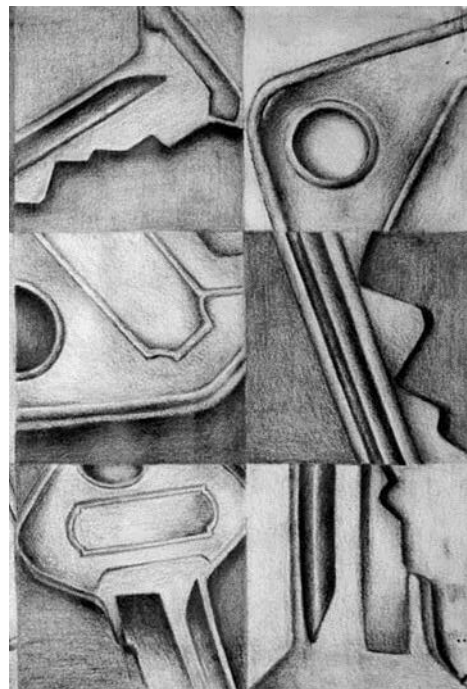
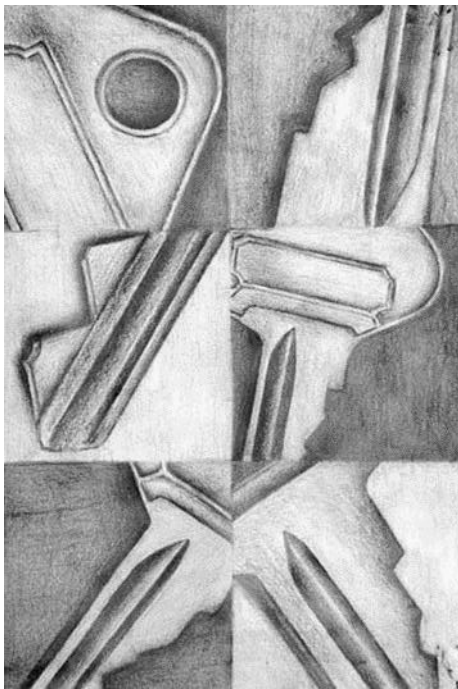
level 2, highly effective

Selective composition - enlarging

Focus – line, shape, form, tone, pattern, texture, composition arrangement

Task instructions

- Divide your page into 6 sections
- Create close-up observations of a section of a key using line, shape and tone.
- Important - no box should show the whole key.

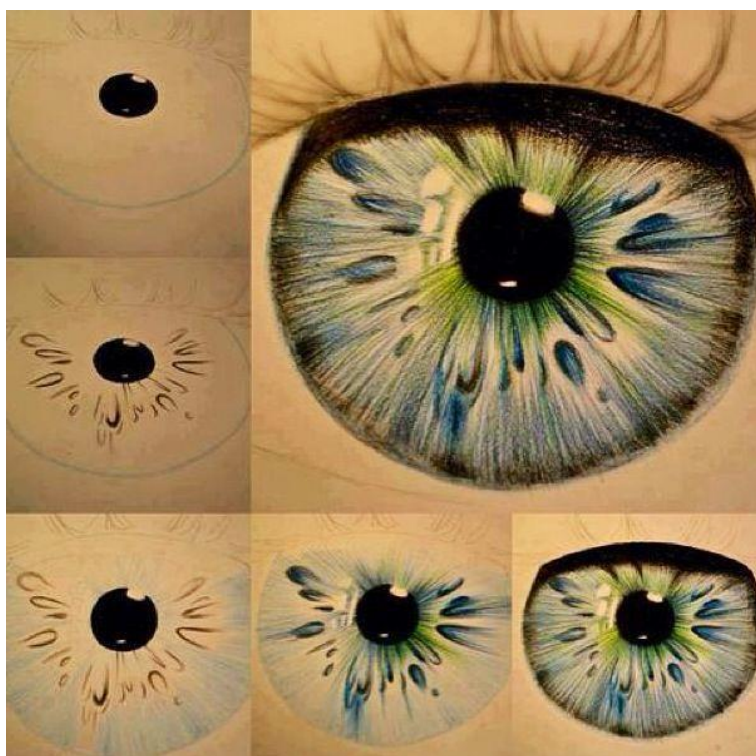


level 4, highly effective

Colour study of an Eye

Task Instructions:

- lightly draw out the shape (you should be drawing from a mirror or a photograph)
- build up the lightest colour and tone following the form with directional marks
- build and blend colour/ tone gradually use the diagram below as a guide
- do not use hard lines.
- you do not need to add individual hairs for the eyelashes.



Design – typography

Task: choose a mammal / insect / bird / reptile. Draw a simplified outline of the creature, and then try and fit the name of the creature within the body shape.

- Experiment with 4 designs for the same creature.
- Draw in pencil first, then go over your drawing in fine-liner pen.
- Choose your best design to go on the bag. Your design will be used as a logo for a new Company.



HOT DOGGER

GRASS HOPPER

OCTOPUS

FISH

Observational Drawing - Stylising and Simplifying for Design Development

Task: complete a tonal study of an object, or even use one of the tonal drawings you completed earlier from this booklet. Now create 3 stages of stylising and simplifying your drawing for design using similar approaches to below. You should have 4 drawings.

1. Realistic tonal drawing of a bird
2. Simplified, line illustration of a bird
3. Stylised, 3 colour selection drawing of a bird
4. Stylised, simplified, positive and negative drawing of a bird, suitable for logo creation



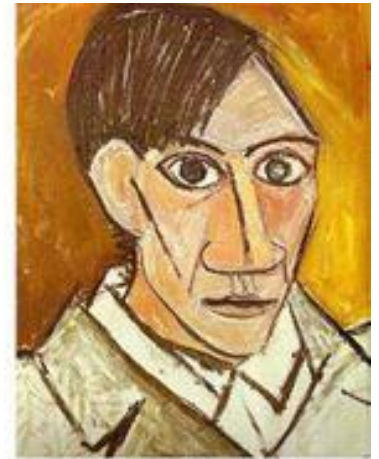
1 2
3 4



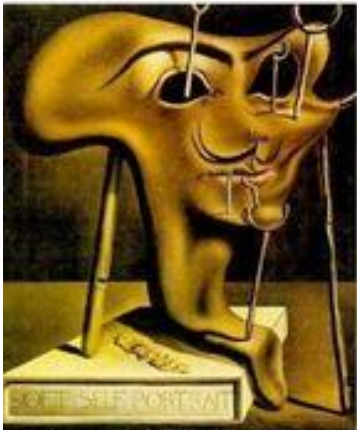
Vincent Van Gogh 1889



Frida Kahlo 1940



Pablo Picasso 1907



Salvador Dali 1970



Albert Durer 1500

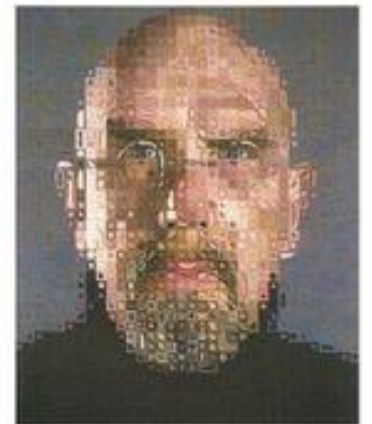
Rembrandt Van Rijn 1628



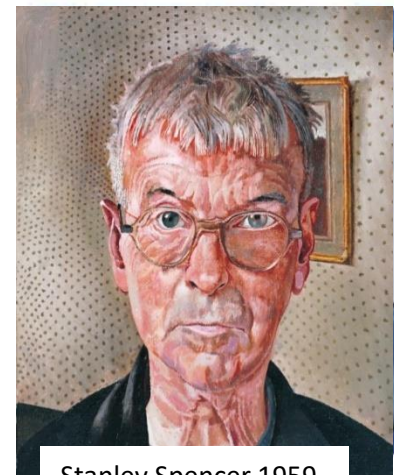
Task: Look carefully at all the Artists' self-portraits. Choose 2 portraits to discuss. Answer these questions for both chosen artworks.

Questions

1. What can you see in the painting?
2. What is the mood/feeling of the painting – e.g. calm, angry, sad, joyful, hopeful ...
3. Can you use the visual elements and wordbank to describe the self-portrait?
4. Which is your favourite portrait painting? Why?



Chuck Close 2005

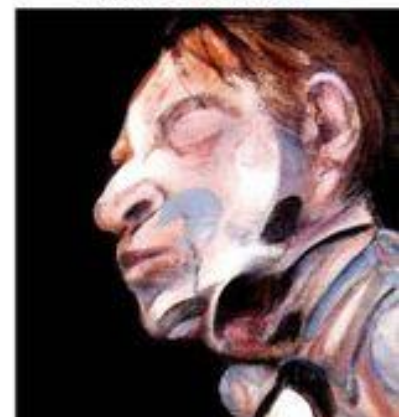


Stanley Spencer 1959

Andy Warhol 1986



Francis Bacon 1972



Artist 1 name:

Date of Self Portrait:

1. What can you see in the painting?
2. What is the mood/feeling of the painting – e.g. calm, angry, sad, joyful, hopeful ...
3. Can you use the visual elements and wordbank to describe the self-portrait?

Artist 2 name:

Date of Self Portrait:

1. What can you see in the painting?
2. What is the mood/feeling of the painting – e.g. calm, angry, sad, joyful, hopeful ...
3. Can you use the visual elements and wordbank to describe the self-portrait?

Which is your favourite portrait painting? Why?

Recommended Websites

Work created by Artists and Designers

Historical and Contemporary

www.nationalgallery.org.uk

www.npg.org.uk

www.tate.org.uk

www.artuk.org

www.britishmuseum.org

www.nms.ac.uk

www.moma.org

<https://artsandculture.google.com/explore>

www.designishistory.com

www.designmuseum.org

www.ica.org.uk

www.magnumphotos.com

www.architecture.com

www.vogue.com

www.guggenheim.org

www.dezeen.com

www.wallpaper.com

BGE Visual Elements Word bank and Sentence Starters

LINE

straight	broken	faint	free
angular	flowing	fine	sharp
thick	broad	short	curved
loose	confident	strong	wavy
bold	thin	soft	jagged

SHAPE and FORM

angular	organic	sharp	pointed
square	body	figure	rounded
circular	geometric	spherical	cylindrical
proportion size	multi-faceted	mass	bulky
solid	fluid	dense	

TONE

contrast	dark	faded	soft
gradient	shadow	shading	highlight
cast	diffused	solid	bright
light	smooth	harsh	graduated
mid-tone	range	reflected	tinted

COLOUR

primary	secondary	complementary	dull
pale	deep	bright	vibrant
warm	cool	tinted	soft
contrast	shade	harmonious	pastel
flat	pure	mixed	

PATTERN

natural	simple	plain	complicated
intricate	repeat	symmetrical	stamped
spiral	irregular	structured	overlapped
continuous	cross hatch	stripes	zig - zag

TEXTURE

rough	smooth	hard	soft
furry	scaly	cracked	grainy
dry	wet	spiky	glossy
matt	shiny	bumpy	silky
coarse	uneven		

COMPOSITION

background	middle-ground	foreground	perspective
symmetry	complex	simple	centred
asymmetric	focus		

Sentence starter help when thinking of analysing an Artist's Artwork

Try thinking of your own too

- My first impressions of this artwork are ...
- The artwork of work is about ...
- In this artwork I can see ...
- I think the Artist has made this artwork by
- This artwork reminds me of ... because
- The part I find the most interesting is ... because
- I think this artwork is about ... because
- The colours the Artist has used are ...
- This artwork of work makes me feel ... because
- The areas I like / don't like in this artwork are ...



A site to look at student artwork (English Schools) and hints and tips on media application

<http://www.studentartguide.com>

Videos

Drawing tutorial of a hand:

focus - hatching and blending techniques

<https://www.youtube.com/watch?v=qfHU16E5uVo&playnext=1&list=PL201F0BDC411BDC9>

Drawing using fine-liner pens – e.g. turtle

<https://www.youtube.com/watch?v=zvGGLzzAelo&t=6s>

Drawing using a sight technique

https://www.youtube.com/watch?v=Otv_l_qkML4&feature=share

Painting fruit – watercolour

https://www.youtube.com/watch?time_continue=2&v=fPBlpi5QygU&feature=emb_logo

Timelapse – portrait painting. Underpainting and colour layering

https://www.youtube.com/watch?time_continue=16&v=vGJHIF-uOmM&feature=emb_title

How to draw a city using 2 point perspective

https://www.youtube.com/watch?v=yNq78n02fMQ&feature=emb_title

Hour long videos

The Secret of Drawing

Episode 1 -

https://www.youtube.com/watch?v=9H59cVnnF9Y&feature=emb_title

Episode 2 - https://www.youtube.com/watch?v=DY_t2cwJQnw

Episode 3 - https://www.youtube.com/watch?v=DY_t2cwJQnw

Episode 4 - <https://www.youtube.com/watch?v=x4X-jWKzaaQ>

Art and Design Games for Fun

<https://artsology.com/games.php>

<http://www.getty.edu/gettygames/>

www.tate.org.uk/kids/games-quizzes

Best Free Photoshop Alternatives

<https://www.gimp.org/>

<https://pixlr.com/editor/>

<https://www.photopea.com/>

Take a Look Inside an Art Gallery

Tate Modern

<https://www.youtube.com/watch?v=z3uoNIKDPaY>

Tate Britain

<https://www.youtube.com/watch?v=Bq-zKher4t0>

Museum of Modern Art, New York

<https://www.youtube.com/watch/?v=0oly6d0zIZM>

Pupil Voice - For Learners who LOVE ANIME

here are a few drawing tutorials



Breaking down images to basic forms

https://www.youtube.com/watch?v=THgHFFDbiiw&list=PLBVyYeuT_pyqBK1EmbnmRh4HXDuvfWBU4&index=9

Anime girl from basic shapes

https://www.youtube.com/watch?v=-EFSGhCeyUU&list=PLBVyYeuT_pyqBK1EmbnmRh4HXDuvfWBU4&index=3

Anime male from basic shapes

https://www.youtube.com/watch?v=2aXk8daAarg&list=PLBVyYeuT_pyqBK1EmbnmRh4HXDuvfWBU4&index=28

Mapping the face

https://www.youtube.com/watch?v=05or04sGAo&list=PLBVyYeuT_pyqBK1EmbnmRh4HXDuvfWBU4&index=17

Anime hands

https://www.youtube.com/watch?v=xV3PmbBU9c0&list=PLBVyYeuT_pyqBK1EmbnmRh4HXDuvfWBU4&index=32

Anime feet

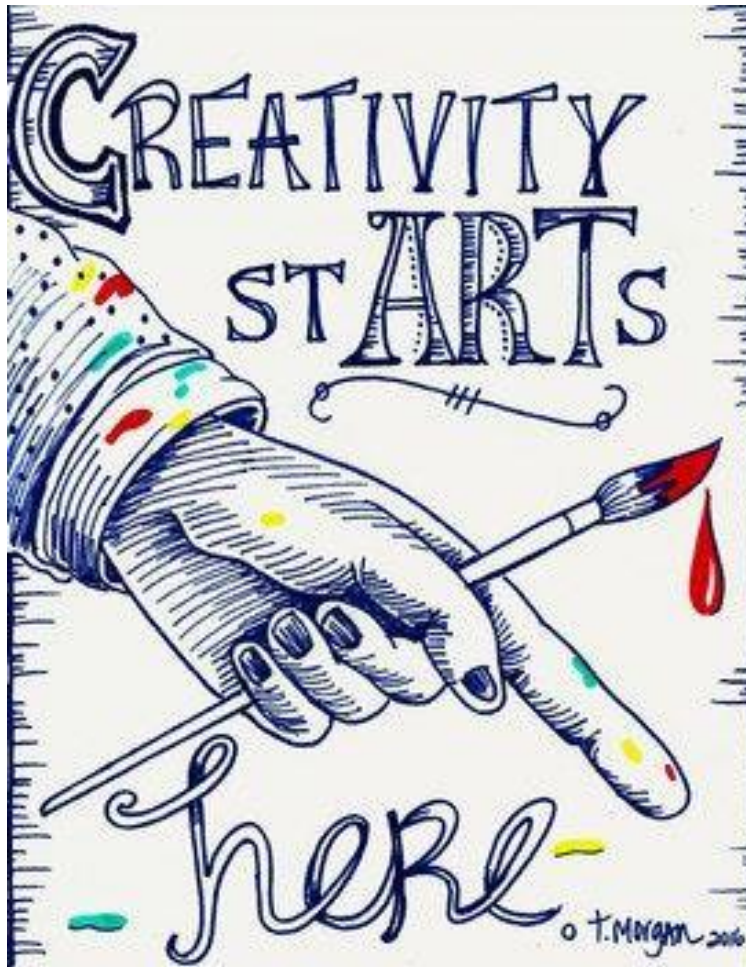
https://www.youtube.com/watch?v=yQNqnrGaBsw&list=PLBVyYeuT_pyqBK1EmbnmRh4HXDuvfWBU4&index=55

Basic anime fighters

https://www.youtube.com/watch?v=oQNhoRYq1Ow&list=PLBVyYeuT_pyqBK1EmbnmRh4HXDuvfWBU4&index=23

Adding tone to manga drawing

https://www.youtube.com/watch?v=SN3zE_CtvOA&list=PLBVyYeuT_pyqBK1EmbnmRh4HXDuvfWBU4&index=5



Art and Design Related Careers

Take a look to find out where Art and Design can take you...

www.planitplus.net/Schools/SubjectCareerList?mysubject=Art%20and%20Design

www.creativeskillset.org/nations/scotland

www.thecreativeindustries.co.uk/industries

www.myworldofwork.co.uk/my-career-options/creative