

Still life Unit, BGE Learners



Do you need support for reading?



- ✓ Use '**read aloud**' function when you open a pdf

You may need to open up the pdf on

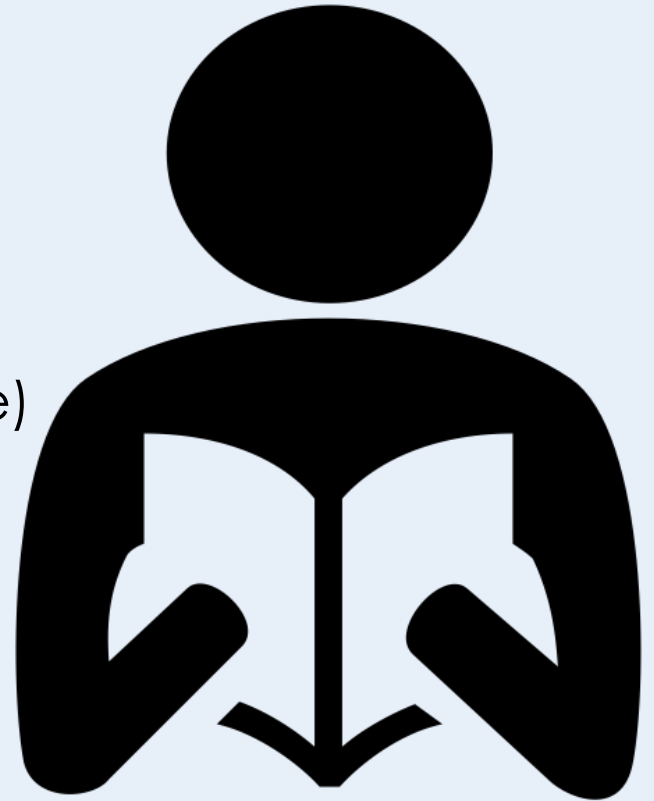


Microsoft Edge browser

or use TTS reader (instructions on next page)

or use

- ✓ IVONA Reader
- ✓ Immersive reader



Using ttsreader.com to help you with pdf file reading tasks

- open up the pdf file the teacher has set you
- open up ttsreader.com
- upload the pdf file to the upload symbol



You can choose the accent (voice type) that you want to listen to here



You can change the speed here

Developing Transferrable Skills



- **Communication** – reading, watching and listening
- **Employability** - using initiative and being self-motivated / organisational skills / working under pressure/ ability to learn & adapt
- **Enterprise** – through creation of a product
- **Health and wellbeing** – ability to learn & adapt / valuing diversity and difference
- **Numeracy** – measuring / shape and form
- **Problem solving** - develop and test possible solutions / analyse and evaluate results
- **Thinking** - remembering, identifying, understanding, applying, analysing, evaluating, and creating.

Still Life – Task 5

We are learning to:

- apply our research skills
- analyse a variety of still life work by artists
- combine the visual elements in our expressive work using a variety of techniques inspired by the work of others.
- use success criteria to evaluate our own work.

EXA: 1-02a/2-02a/3-02a

1-03a/2-03a/3-03a

1-04a/2-04a/3-04a

1-05a/2-05a

1-07a/2.07a/3-07a

Success Criteria

- I can use research skills
- I can discuss artworks and be inspired by the work of others
- I can show an understanding of line, shape, colour, pattern and scale of objects when drawing from a primary or secondary source
- I can use media techniques inspired by the work of others and apply them to my artwork
- I can identify my strengths and set targets for my learning

This photo looks a bit drab in black and white, I think it needs...



Roy Lichtenstein, Galerie Ileana Sonnabend, Paris (installation view), 1963.



colour

Roy Lichtenstein in his studio at 190 Bowery, New York, 1969.

Photograph by Lord Snowdon/Trunk Archive.

Roy Lichtenstein Still Lives

Roy Lichtenstein began painting still lifes in 1972, but not in the traditional way of representing everyday objects in art.

Lichtenstein filled his compositions with references to great artists of the past. In his prints and paintings, you can find

- **guitars** in the style of **Picasso**,
- bowls of **goldfish** borrowed from **Matisse**,
- and **peeled lemons** made popular by the **Dutch Old Masters of the 17th century**, and more.

Task 5: part 1. Art Detective



You are an art detective. Create a PPP or a word doc.

You are tasked with finding following images by Lichtenstein and an artwork that inspired him.

1. Roy Lichtenstein, Cubist Still Life, 1974 and find an artwork with **guitars** by **Picasso**.
2. Roy Lichtenstein, Goldfish Bowl, 1977 . This is a still life sculpture! Find an artwork with **goldfish** by **Matisse**.
3. Roy Lichtenstein, Still Life with Glass and Peeled Lemon, 1972. Find an artwork that has **peeled lemons** by **Dutch Old Masters of the 17th Century**.

A Little Bit about Lichtenstein and Pop Art - The Art Movement

https://www.youtube.com/watch?v=IHBm8_o0PVo



Task 5: part 2. Art Detective Questions

1. What was Roy Lichtenstein inspired to paint in the 1960s? - *this is known as **subject matter** in Art.*
2. What is the name of the special **dot** technique he used?
3. Why did he use this dot technique in his artwork?
4. Why do you think he used bright colours and not realistic colours in his paintings?

Task 5: part 2. Compare and Contrast

Collect the images of the paintings named below in a word document or PPP. You are now going to compare in what ways the 2 paintings below are **the same**, and the ways in which the paintings **are different**.

I would like you answer the questions on the following page as a way of identifying what is similar and different about both artworks.

- Bedroom in Arles, October 1888
by Vincent Van Gogh

- Bedroom at Arles, 1992 by Roy
Lichtenstein

Compare and Contrast Two Paintings

Write single words or adjectives to fill the boxes below.

Painting 1	Painting 2
Bedroom in Arles, October 1888 by Vincent Van Gogh	Bedroom at Arles, 1992 by Roy Lichtenstein
Colour: Describe the colours each artist has used. Are they dark and mysterious or bright and colourful? Which colour has been used the most in each painting? Is the artist using earthy, natural colours or intense, unnatural colours? Are the colours mixed to create light and shadows or are they flat?	
Paint Technique: Describe the way the artist has used the paints and brushes. Can you see the brushstrokes or is the paint applied very smoothly? Do you think a small or large brush has been used? Do you think the artist worked quickly and energetically or slowly and carefully? Is the paint watery and washy or is it thickly applied? What sort of textures have been created?	

Composition (use of shapes):

What types of shapes have been used in each painting?

Are they rounded and organic or sharp, spiky, angular?

Are there different types of shapes in each painting or has the artist just chosen one sort of shape?

Is the painting full and crowded or is it quite simple and plain, with lots of empty space?

Mood:

How do you feel when you look at each painting?

Is it happy or sad?

Peaceful or lively?

Mysterious?

Gloomy?

Exciting?

Joyful?

What would it be like to live inside this painting?

Your Opinion:

Describe which painting you like best and why you prefer it.

Create a Still Life Inspired by the Work of Others

You are going to be inspired by the artwork of Roy Lichtenstein and his use of

art materials – media and techniques

the style in which he worked – the overall look

investigating the visual elements – **line, shape, tone, form, colour, pattern and texture.**



Roy Lichtenstein

Still Life with Lobster [1974]



Roy Lichtenstein

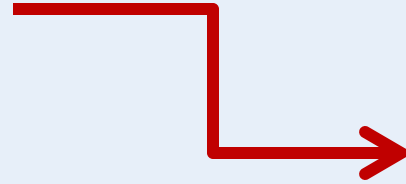
Collage for Brushstroke Still Life with
Coffee Pot (1996)

Take a walk around a gallery and look at the Roy Lichtenstein exhibition at the Gagosian Gallery in New York during 2010. It was the last time all of his still lifes, including still life sculpture, were together.

<https://www.youtube.com/watch?v=qQlelrGr5x8>



Using the photographs that you took during task 4. You will be working from the photograph, or still life set up, that you have chosen for task 5. My chosen still life composition is



How about this for an unusual still life composition arrangement.

Still lifes can be fun!

Look at **pupils' work** on the next couple of pages, working in the style of Lichtenstein.



e.g.'s of pupils' work



Inspired by the techniques and style of Lichtenstein

e.g's of pupils' work



Inspired by the techniques and style of Lichtenstein

Task 5: part 3.

Create a Still Life in the Style of Lichtenstein.



I took 5 photos in task 4

I selected this photograph for task 5.

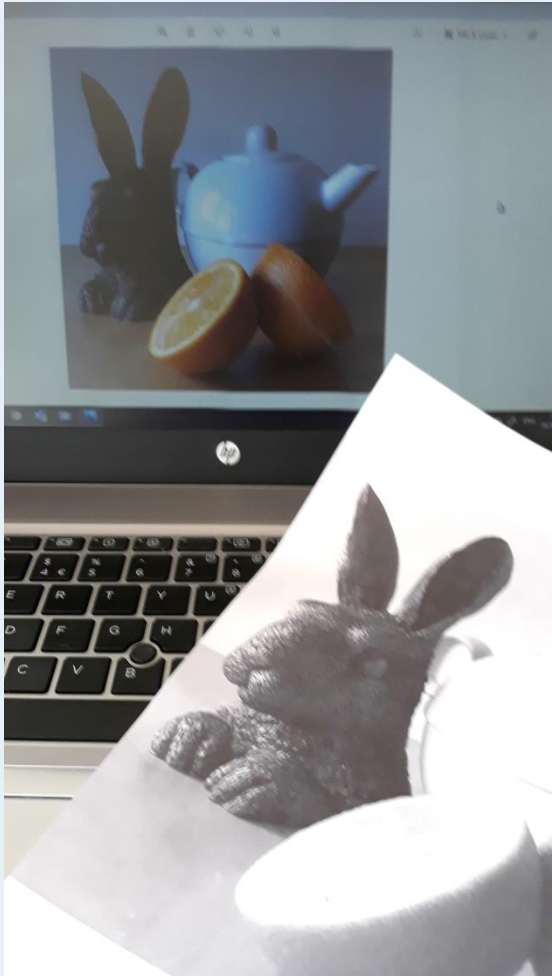


Watch: <https://sway.office.com/WCASoZtqrWi1rqHt?ref=Link>

- Have you captured the scale of your objects correctly?
- **Read the do's and don'ts**
- Draw your still life out in pencil first
- Using colour, shape and pattern choose to recreate techniques in the style of Lichtenstein
- Evaluate your work and post photos of your work on Teams



You do not need to print your composition



You **do not** need to print off your composition.
You can either

1. Draw from a primary source – the actual still life is set up in front of you, arranged in the way that you like best.
2. Draw from a secondary source – draw from an image that you can see on your phone (zoomed in), camera, tablet or computer.

Task 5: Create a still life composition in the style of Lichtenstein.

DO

- Have at least 3 objects you want to show off.
- Pick interesting objects to include. Is there a theme to your still life?
- Consider what they will be sitting on. A cloth with creases? A table with a background?
- Think about where each item is placed so that it looks balanced.

Think about composition (arrangement of the objects) Is there a focal point?

- Think about lighting. Is there light shining from one direction? Could you use a torch or camera phone torch to light it from one side?



Task 5: Create a still life composition in the style of Lichtenstein.

DON'T

- Clunk random objects together for a quick photo
- Throw your objects into any old arrangement without thinking
- Take your photo in too bright/dark an area. It needs to be well lit

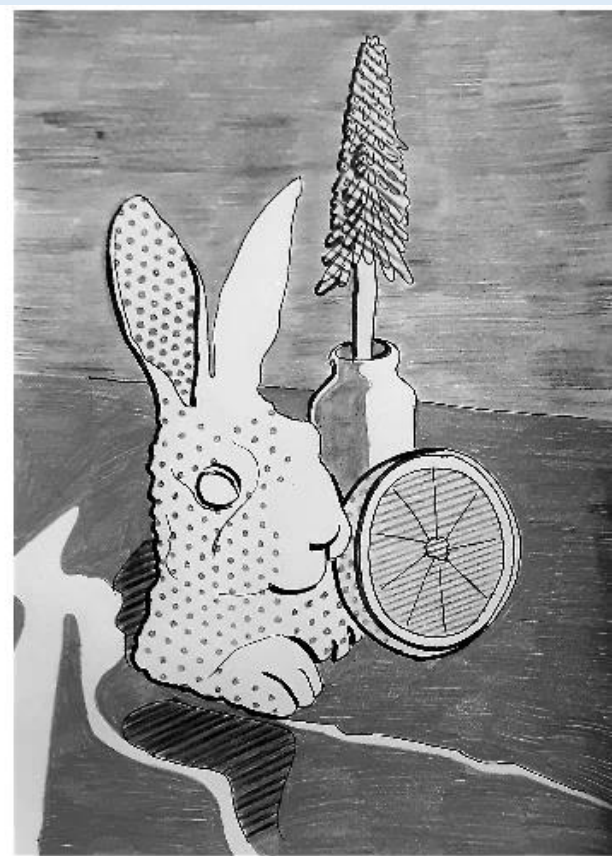
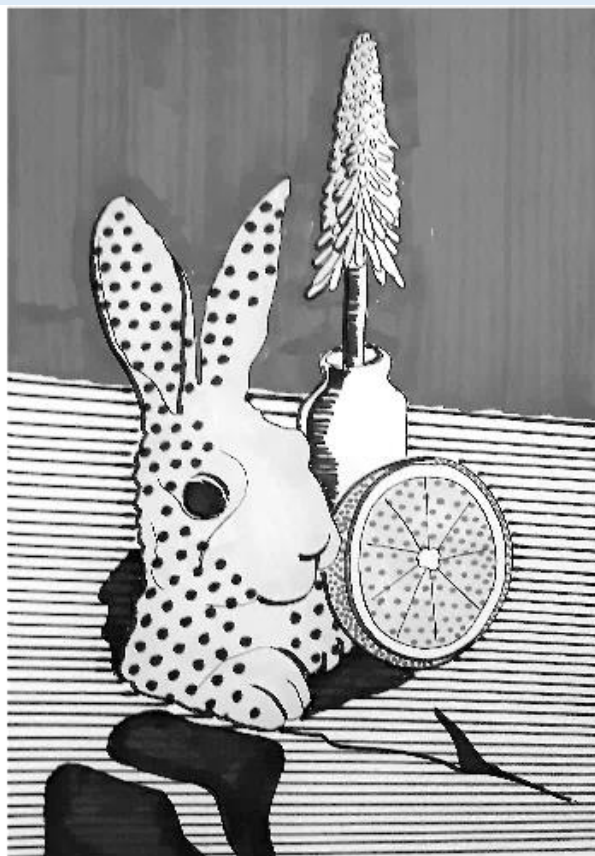
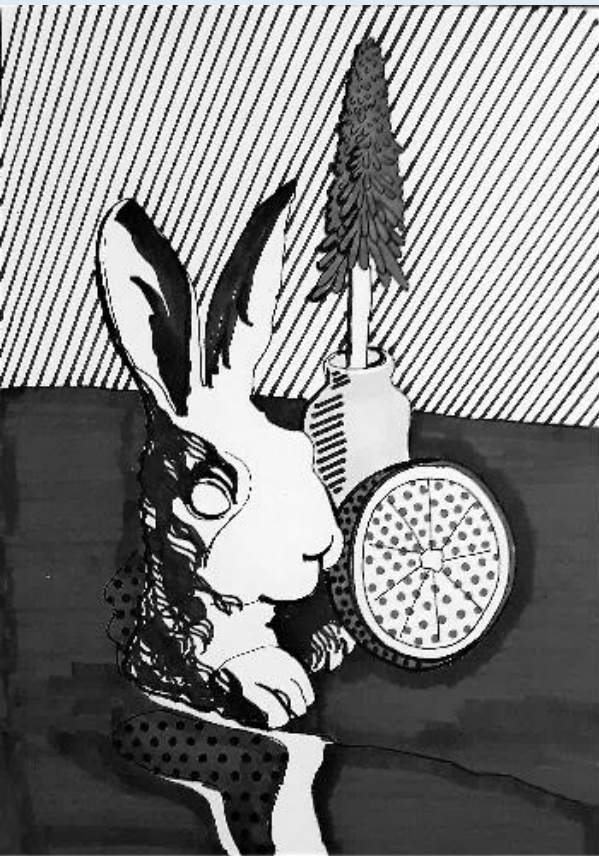


UNABLE TO TAKE PHOTOS?

If you don't have a camera / phone / tablet to take a photo, try and choose objects that you do not have to move until you have finished your still life drawing.

NO ACCESS TO COLOUR PENS OR PENCILS?

Create a tonal version. See next image.

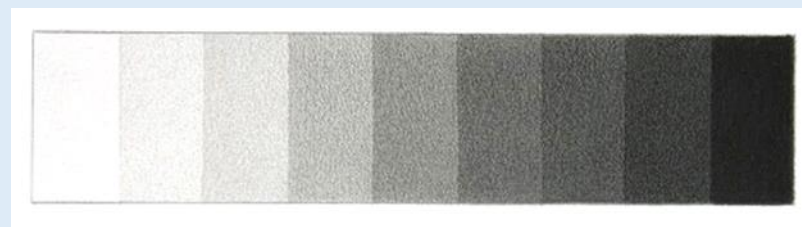


If you have no access to colour, create your artwork using tone.

Have white and black areas, and add a range of **tone**

- light tone, mid tone and dark tones.

Remember your prior learning.



Technique Videos also available here

Cedarbank School Art and Design



Trending All Videos My Videos



Still life - task 1, tonal object cylinde...



Still life - task 5, Lichtenstein



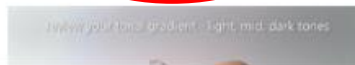
Still life - task 4, composition with p...
2 views



Still life - task 1, tonal object
5 views



Still life - task 2, pen & ink vegetables
1 view



scotland.sharepoint.com/portals/hub/_layouts/15/PointPublishing.aspx?app=video&p=p&chid=00d7643e-8df6-45da-92ca-66fff22c7ea7&vid=772bf12d-2f84-4961-b97f-c1a7532410fc

https://glowscotland.sharepoint.com/portals/hub/_layouts/15/PointPublishing.aspx?app=video&p=c&chid=00d7643e-8df6-45da-92ca-66fff22c7ea7&s=0&t=pfb



Success Criteria

- I can use research skills
- I can discuss artworks and be inspired by the work of others
- I can show an understanding of line, shape, colour, pattern and scale of objects when drawing from a primary or secondary source
- I can use media techniques inspired by the work of others and apply them to my artwork
- I can identify my strengths and set targets for my learning

Please look at your work and self mark against the success criteria



I can use research skills



I can discuss artworks and be inspired by the work of others



I can show an understanding of line, shape, colour pattern and scale of objects when drawing from a primary or secondary source



I can use media techniques inspired by the work of others and apply them to my artwork



I can identify my strengths and set targets for my learning

Home Learning Evaluation

How
happy are
you with
your home
learning?



What is the best thing about it?

How could you have improved
it?

**Please upload a photograph of your work
and evaluation to your Team Page**

Developing Transferrable Skills



- **Communication** – reading, watching and listening
- **Employability** - using initiative and being self-motivated / organisational skills / working under pressure/ ability to learn & adapt
- **Enterprise** – through creation of a product
- **Health and wellbeing** – ability to learn & adapt / valuing diversity and difference
- **Numeracy** – measuring / shape and form
- **Problem solving** - develop and test possible solutions / analyse and evaluate results
- **Thinking** - remembering, identifying, understanding, applying, analysing, evaluating, and creating.



Photograph by Lord Snowdon/Trunk Archive.
No further attributions or copyright
can be found on the internet.



Fair use copyright.
Galerie Ileana
Sonnabend, Paris
(installation view), 1963



<http://byricardomarcenaroi.blogspot.com/2012/07/painter-lichtenstein-roy-90s-works-part.html>
Creative commons free

Acknowledgements of Creative Commons or Copyright Licenses



<https://www.flickr.com/photos/gandalfgallery/11885250816/>
Creative commons
free